

Lakeshore Area Residents are Fortunate

to live so close to the beautiful waterways and shorelines of Lake Michigan. Fishing and water sports are popular choices for entertainment in our community.

Residents enjoy public beaches such as Grand Mere State Park and Lincoln Township Beach, both located within 5 miles of downtown Stevensville. Positioned on the sunset side of the state, you may watch the sun seemingly sink into Lake Michigan each evening. The Lakeshore area offers a great combination of industry, farming, and beachfront to entertain, employ, and interest visitors as well as residents.

Many vacationers visit year after year, and have built second or retirement homes here.



Photo by Don Ames

From farming to industry, shopping to tourism, we offer something for everyone.

You can find a complete listing of area activities at www.lakeshorechamber.org

Blossomtime Parade
1st Saturday of May
1:00 PM



Memorial Day Parade/Services
Baroda. Sunday, Memorial Weekend
Service at 11:00AM Hinman Cemetery
Parade at 1:00PM
Service at 2:00PM Ruggles Cemetery
Stevensville. Monday, Memorial Weekend
Parade at 11:00AM
Service at Lincoln Township Cemetery

Discover Stevensville Festival
Last weekend in June

American Cancer Society Relay for Life
Last weekend of June
The Berrien County Fairgrounds

Baroda Fireworks
July 3 at dusk

Art Fair
2nd weekend in July in St. Joe

Venetian Festival
3rd weekend in July in St. Joe

Berrien County Youth Fair
3rd week of August

BarodaFest
1st Saturday after Labor Day



Lakeshore Chamber of Commerce



Serving the Southwest Michigan Communities of Stevensville

Baroda
South St. Joseph
Lincoln Township



4290 Red Arrow Highway
Stevensville, Michigan 49127
PHONE 269-429-1170 FAX 269-429-8882

E mail
info@lakeshorechamber.org

Complete Member Listing at
www.lakeshorechamber.org

MICHIGAN'S *Great* SOUTHWEST
into the business of life.

Located on the sunset shores of beautiful Lake Michigan, the Lakeshore Area provides an exciting place to live, work, and vacation. We are especially proud of our area's excellent school systems, many fine restaurants and lodges, farm fresh produce, wineries, and abundant business opportunities.

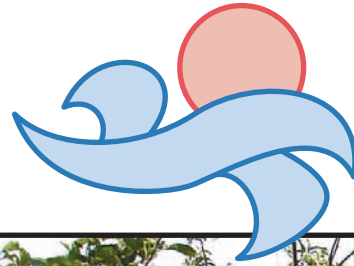


Photo by Don Ames

The Lakeshore area is conveniently located just off Interstate 94, exits 16-23. Our communities provide a unique combination of suburban living within easy driving distance of Chicago (90 miles), South Bend (35 miles), and Kalamazoo (52 miles).

In addition, there are commercial airports in Kalamazoo, Grand Rapids, and South Bend. Rail service is also available.

Lakeshore Chamber of Commerce



Lakeshore is a suburban community with a mixture of light industry, agriculture, and subdivisions. The unique combination of suburban living within easy driving distance of Chicago, Illinois, South Bend, Indiana, and Kalamazoo, Michigan attracts managerial and professional families. Our slower paced personal lives, combined with our challenging, fast paced professional lives make our area the perfect place to live, start a business, and raise a family!



A volunteer organization devoted to the advancement of commercial, industrial, civic, and cultural opportunities in the Lakeshore community and surrounding areas.

Visit our website at www.lakeshorechamber.org for a complete listing of members a map of the local area and calender of events.